

# TEST 1 « Scale »

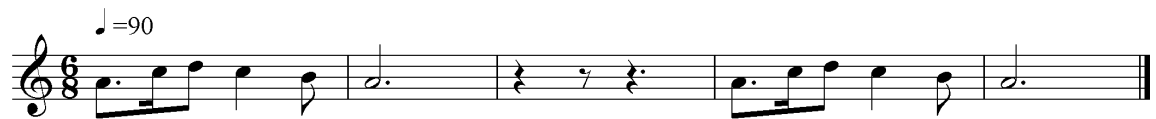
Ex. 1

♩ = 120



Ex. 2

♩ = 90



1-

♩ = 150



2-

♩ = 120



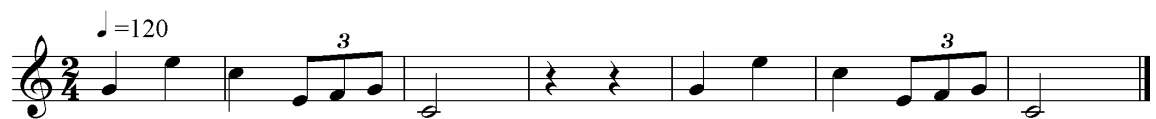
3-

♩ = 90



4-

♩ = 120



5-

♩ = 100



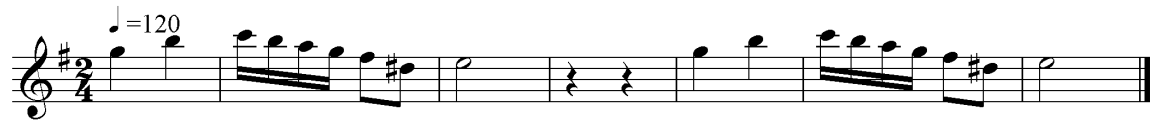
6-



7-



8-



9-



10-



11-



12-



13-



14-



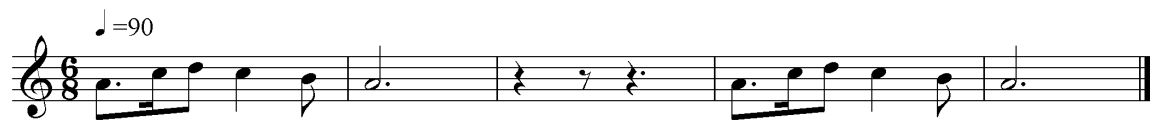
15-



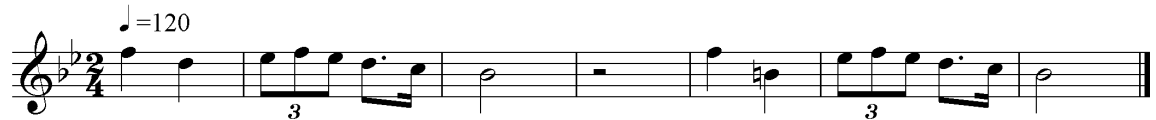
16-



17-



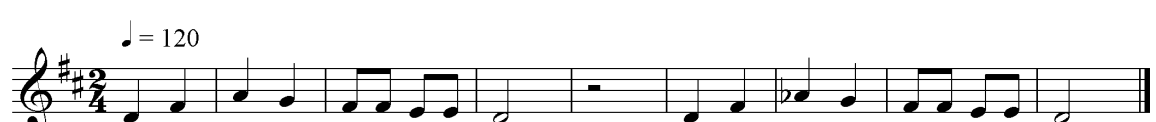
18-



19-



20-





7-

Musical notation for exercise 7: Treble clef, 6/8 time signature, key signature of one sharp (F#). Tempo marking: ♩ = 90. The melody consists of six measures: G4-A4-B4, C5-B4-A4, G4 (quarter rest), G4 (quarter rest), A4-B4-C5, B4-A4-G4.

8-

Musical notation for exercise 8: Treble clef, 3/4 time signature, key signature of two flats (Bb, Eb). Tempo marking: ♩ = 150. The melody consists of six measures: G4-A4-B4, C5-B4-A4, G4 (quarter rest), G4 (quarter rest), A4-B4-C5, B4-A4-G4.

9-

Musical notation for exercise 9: Treble clef, 6/8 time signature, key signature of one sharp (F#). Tempo marking: ♩ = 112,5. The melody consists of six measures: G4-A4-B4, C5-B4-A4, G4 (quarter rest), G4 (quarter rest), A4-B4-C5, B4-A4-G4.

10-

Musical notation for exercise 10: Treble clef, 3/4 time signature, key signature of two flats (Bb, Eb). Tempo marking: ♩ = 150. The melody consists of six measures: G4-A4-B4, C5-B4-A4, G4 (quarter rest), G4 (quarter rest), A4-B4-C5, B4-A4-G4.

11-

Musical notation for exercise 11: Treble clef, 3/4 time signature, key signature of two flats (Bb, Eb). Tempo marking: ♩ = 150. The melody consists of six measures: G4-A4-B4, C5-B4-A4, G4 (quarter rest), G4 (quarter rest), A4-B4-C5, B4-A4-G4.

12-

Musical notation for exercise 12: Treble clef, 6/8 time signature, key signature of one sharp (F#). Tempo marking: ♩ = 90. The melody consists of six measures: G4-A4-B4, C5-B4-A4, G4 (quarter rest), G4 (quarter rest), A4-B4-C5, B4-A4-G4.

13-

Musical notation for exercise 13: Treble clef, 3/4 time signature, key signature of one sharp (F#). Tempo marking: ♩ = 150. The melody consists of six measures: G4-A4-B4, C5-B4-A4, G4 (quarter rest), G4 (quarter rest), A4-B4-C5, B4-A4-G4.

14-

Musical notation for exercise 14: Treble clef, 2/4 time signature, key signature of two sharps (F#, C#). Tempo marking: ♩ = 120. The melody consists of six measures: G4-A4-B4, C5-B4-A4, G4 (quarter rest), G4 (quarter rest), A4-B4-C5, B4-A4-G4.

15-

Musical notation for exercise 15, featuring a treble clef, a key signature of one flat (B-flat), and a 2/4 time signature. The tempo is marked as quarter note = 100. The melody consists of eighth notes and quarter notes, with two triplet markings over groups of three eighth notes.

16-

Musical notation for exercise 16, featuring a treble clef, a key signature of two flats (B-flat and E-flat), and a 2/4 time signature. The tempo is marked as quarter note = 120. The melody includes quarter notes, eighth notes, and a triplet of eighth notes.

17-

Musical notation for exercise 17, featuring a treble clef, a key signature of two sharps (F# and C#), and a 2/4 time signature. The tempo is marked as quarter note = 120. The melody includes quarter notes, eighth notes, and sixteenth notes, with a triplet of sixteenth notes.

18-

Musical notation for exercise 18, featuring a treble clef, a key signature of two flats (B-flat and E-flat), and a 6/8 time signature. The tempo is marked as quarter note = 90. The melody includes quarter notes, eighth notes, and a triplet of eighth notes.

19-

Musical notation for exercise 19, featuring a treble clef, a key signature of two flats (B-flat and E-flat), and a 2/4 time signature. The tempo is marked as quarter note = 120. The melody consists of quarter notes and eighth notes.

20-

Musical notation for exercise 20, featuring a treble clef, a key signature of one flat (B-flat), and a 3/4 time signature. The tempo is marked as quarter note = 150. The melody consists of quarter notes and half notes.



7-

Musical notation for exercise 7. It is in 2/4 time with a key signature of two flats (Bb, Eb). The tempo is marked as quarter note = 120. The melody consists of: quarter note Bb, quarter note Eb, eighth notes Eb, D, C, Bb, quarter note Bb, quarter rest, quarter note Bb, eighth notes Eb, D, C, Bb, quarter note Bb.

8-

Musical notation for exercise 8. It is in 2/4 time with a key signature of two flats (Bb, Eb). The tempo is marked as quarter note = 150. The melody consists of: quarter note Bb, eighth notes Eb, D, C, Bb, quarter note Bb, quarter note Bb, eighth notes Eb, D, C, Bb, quarter note Bb, quarter note Bb, eighth notes Eb, D, C, Bb, quarter note Bb.

9-

Musical notation for exercise 9. It is in 6/8 time with a key signature of two flats (Bb, Eb). The tempo is marked as quarter note = 90. The melody consists of: quarter note Bb, eighth notes Eb, D, C, Bb, quarter note Bb, quarter rest, eighth notes Bb, A, G, F, quarter note Bb, eighth notes Eb, D, C, Bb, quarter note Bb.

10-

Musical notation for exercise 10. It is in 2/4 time with a key signature of one sharp (F#). The tempo is marked as quarter note = 120. The melody consists of: quarter note F#, quarter note C, eighth notes C, B, A, G, F#, quarter note F#, quarter rest, quarter rest, quarter note F#, eighth notes C, B, A, G, F#, quarter note F#.

11-

Musical notation for exercise 11. It is in 2/4 time with a key signature of two sharps (F#, C#). The tempo is marked as quarter note = 120. The melody consists of: quarter note F#, quarter note C#, eighth notes C#, B, A, G, F#, quarter note F#, quarter rest, quarter rest, quarter note F#, eighth notes C#, B, A, G, F#, quarter note F#.

12-

Musical notation for exercise 12. It is in 2/4 time with a key signature of one flat (Bb). The tempo is marked as quarter note = 120. The melody consists of: quarter note Bb, quarter note Bb, eighth notes Bb, A, G, F, quarter note Bb, quarter rest, quarter rest, quarter note Bb, eighth notes Bb, A, G, F, quarter note Bb.

13-

Musical notation for exercise 13. It is in 2/4 time with a key signature of two sharps (F#, C#). The tempo is marked as quarter note = 120. The melody consists of: quarter note F#, quarter note C#, eighth notes C#, B, A, G, F#, quarter note F#, quarter rest, quarter note F#, eighth notes C#, B, A, G, F#, quarter note F#.

14-

Musical notation for exercise 14. It is in 2/4 time with a key signature of one sharp (F#). The tempo is marked as quarter note = 100. The melody consists of: quarter rest, eighth notes F#, G, A, B, quarter note F#, eighth notes F#, G, A, B, quarter note F#, quarter rest, quarter rest, eighth notes F#, G, A, B, quarter note F#.



15-

♩ = 90

Musical notation for exercise 15, featuring a treble clef, 6/8 time signature, and a tempo marking of ♩ = 90. The melody consists of quarter notes: C4, D4, E4, F4, G4, A4, B4, C5, followed by a whole note C5, a quarter rest, an eighth rest, a quarter rest, and another whole note C5.

16-

♩ = 112,5

Musical notation for exercise 16, featuring a treble clef, 6/8 time signature, and a tempo marking of ♩ = 112,5. The melody consists of quarter notes: D4, E4, F#4, G4, A4, B4, C5, D5, followed by a whole note D5, a quarter rest, an eighth rest, a quarter rest, and another whole note D5.

17-

♩ = 150

Musical notation for exercise 17, featuring a treble clef, 3/4 time signature, and a tempo marking of ♩ = 150. The melody consists of quarter notes: Bb3, C4, D4, Eb4, F4, G4, Ab4, Bb4, followed by a whole note Bb4, a quarter rest, and another whole note Bb4.

18-

♩ = 100

Musical notation for exercise 18, featuring a treble clef, 3/4 time signature, and a tempo marking of ♩ = 100. The melody consists of eighth notes: Bb3, C4, D4, Eb4, F4, G4, Ab4, Bb4, followed by a whole note Bb4, a quarter rest, and another eighth note triplet Bb4, C4, D4.

19-

♩ = 150

Musical notation for exercise 19, featuring a treble clef, 3/4 time signature, and a tempo marking of ♩ = 150. The melody consists of quarter notes: Bb3, C4, D4, Eb4, F4, G4, Ab4, Bb4, followed by a whole note Bb4, a quarter rest, and another quarter note Bb4.

20-

♩ = 150

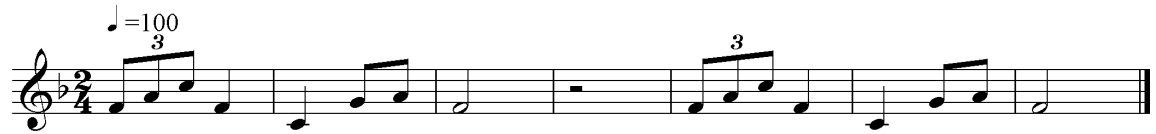
Musical notation for exercise 20, featuring a treble clef, 3/4 time signature, and a tempo marking of ♩ = 150. The melody consists of quarter notes: D4, E4, F#4, G4, A4, B4, C5, D5, followed by a whole note D5, a quarter rest, and another quarter note D5.

## TEST 4 «Rhythm »

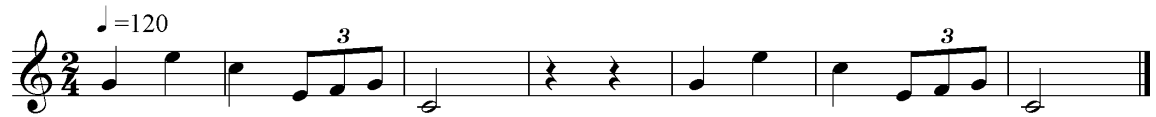
Ex.1



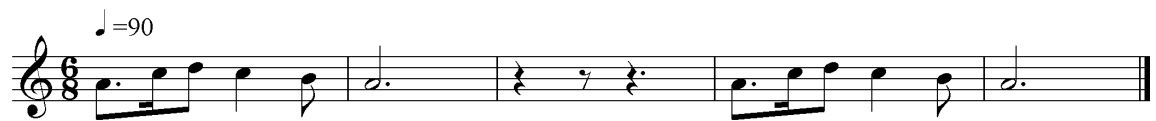
Ex. 2



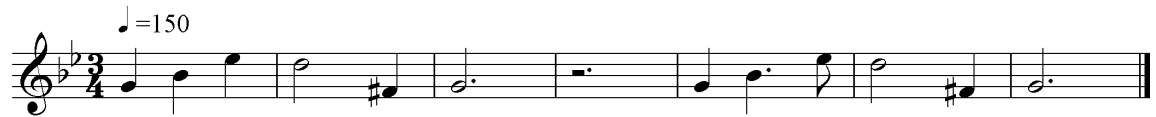
1-



2-



3-



4-



5-



6-



7-

♩=150

Musical notation for exercise 7: Treble clef, 3/4 time signature, key of C major. The melody consists of quarter notes: C4, D4, E4, F4, G4, A4, B4, C5, followed by a whole rest, then C5, B4, A4, G4, F4, E4, D4, C4.

8-

♩=90

Musical notation for exercise 8: Treble clef, 6/8 time signature, key of B-flat major. The melody consists of eighth notes: B4, A4, G4, F4, E4, D4, C4, B3, followed by a whole rest, then B4, A4, G4, F4, E4, D4, C4, B3.

9-

♩=120

Musical notation for exercise 9: Treble clef, 2/4 time signature, key of B-flat major. The melody consists of quarter notes: B4, A4, G4, F4, E4, D4, C4, B3, followed by a whole rest, then B4, A4, G4, F4, E4, D4, C4, B3.

10-

♩=150

Musical notation for exercise 10: Treble clef, 3/4 time signature, key of D major. The melody consists of quarter notes: D4, E4, F4, G4, A4, B4, C5, B4, A4, G4, F4, E4, D4, followed by a whole rest, then D4, E4, F4, G4, A4, B4, C5, B4, A4, G4, F4, E4, D4.

11-

♩=120

Musical notation for exercise 11: Treble clef, 2/4 time signature, key of B-flat major. The melody consists of quarter notes: B4, A4, G4, F4, E4, D4, C4, B3, followed by a triplet of eighth notes: B4, A4, G4, then a whole rest, then B4, A4, G4, F4, E4, D4, C4, B3, followed by a triplet of eighth notes: B4, A4, G4.

12-

♩=100

Musical notation for exercise 12: Treble clef, 2/4 time signature, key of D major. The melody consists of eighth notes: D4, E4, F4, G4, A4, B4, C5, B4, A4, G4, F4, E4, D4, followed by a whole rest, then eighth notes: D4, E4, F4, G4, A4, B4, C5, B4, A4, G4, F4, E4, D4.

13-

♩=150

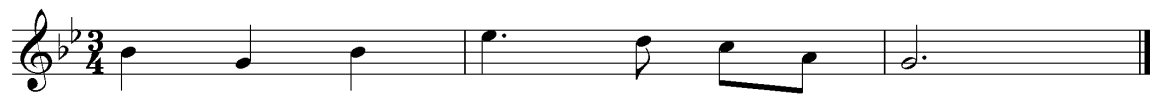
Musical notation for exercise 13: Treble clef, 3/4 time signature, key of D major. The melody consists of quarter notes: D4, E4, F4, G4, A4, B4, C5, B4, A4, G4, F4, E4, D4, followed by a whole rest, then D4, E4, F4, G4, A4, B4, C5, B4, A4, G4, F4, E4, D4.



## TEST 4 «Memory »

### Ex.1

♩=120



### Ex.2

♩=150



1-

♩=120



2-

♩=180



3-

♩=150



4-

♩=225



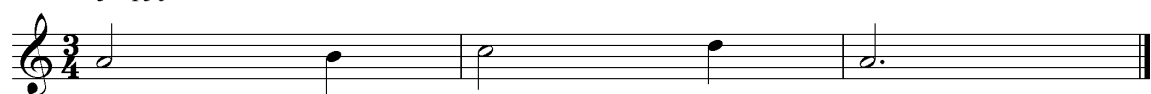
5-

♩=150



6-

♩=150



7-

♩ = 150

8-

♩ = 150

9-

♩ = 100

10-

♩ = 100

11-

♩ = 120

12-

♩ = 180

13-

♩ = 120

14-

♩ = 120

15-

♩=225

Musical notation for exercise 15: Treble clef, key signature of one sharp (F#), 6/8 time signature. The melody consists of six eighth notes: F4, G4, A4, B4, C5, and B4. The piece ends with a double bar line.

16-

♩=120

Musical notation for exercise 16: Treble clef, key signature of one sharp (F#), 2/4 time signature. The melody consists of six eighth notes: F4, G4, A4, B4, C5, and B4. The piece ends with a double bar line.

17-

♩=120

Musical notation for exercise 17: Treble clef, key signature of two sharps (F#, C#), 2/4 time signature. The melody consists of six eighth notes: F4, G4, A4, B4, C5, and B4. A triplet bracket is placed over the first three notes (F4, G4, A4). The piece ends with a double bar line.

18-

♩=150

Musical notation for exercise 18: Treble clef, key signature of one sharp (F#), 3/4 time signature. The melody consists of six eighth notes: F4, G4, A4, B4, C5, and B4. The piece ends with a double bar line.

19-

♩=150

Musical notation for exercise 19: Treble clef, key signature of two flats (Bb, Eb), 3/4 time signature. The melody consists of six eighth notes: F4, G4, A4, B4, C5, and B4. The piece ends with a double bar line.

20-

♩=120

Musical notation for exercise 20: Treble clef, key signature of two flats (Bb, Eb), 3/4 time signature. The melody consists of six eighth notes: F4, G4, A4, B4, C5, and B4. The piece ends with a double bar line.